

D2L Mobile Introduction

If you want to harness the power of mobile D2L, this information is for you! You will be learning how to take advantage of the mobile interface on both Android and Apple devices so that you can incorporate un-tethered access to content, news, discussions, calendar, grades and more into your learning strategy.

Learning Outcomes

By the end of this lesson you will have explored most of the features of the D2L web-based mobile app. At the end of the training you should be able to

- navigate the D2L web-based mobile app

- use the Grades, Calendar, Content, Discussions and News tools across different platforms and devices

Topics

The topics we will cover include

- Accessing the Mobile Interface

- Accessing your Courses

- News

- Content

- Discussions

- Grades

- Calendar

D2L Web-based App vs. Native App



The D2L Learning Environment includes a web-based app for use on hand-held mobile devices. The interface is specifically designed for the small screens and takes advantage of touch or gesture computing. It has a very different look from the desk version of the system.

The focus of the mobile app is to allow students to access features of D2L learning environment on the move.

iOS vs. Android vs. Tablet vs. Smartphone vs. iOS5 vs. iOS6 vs. Ice Cream Sandwich vs. Jellybean.....

A war is being waged between devices (Apple vs. Samsung vs. Asus vs....., Phone vs. Tablet) operating systems (iOS vs. Android vs. Blackberry) and browsers (Safari vs. Firefox vs. Chrome vs.....). Even if you have decided on a device, operating system, and a browser, you also have to consider what version of the software you are dealing with. This leads to an incredibly large number of possible combinations each of which may handle or display mobile web content differently.

Accessing the Mobile Interface

There are several ways to access the D2L Web-based app depending on the Username and Password you use.

Using your Novell Username and Password.

Your Novell ID and Password (e.g. dsmith, and *****) are used to login to an on-campus computer. Using this ID and password you can access the mobile-based app for anywhere by entering the following mobile app URL in your mobile device's web browser. (Note that "http://" or "www" are not required.)

d21.langara.bc.ca/d21/m/home

Tip: Bookmark this URL for easy access later.

Often when accessing the site with the desktop URL d21.langara.bc.ca using a mobile device, the site will direct you to the mobile-app. This is not the case for some devices. If for some reason you have been directed to the desktop version and want the mobile version use the mobile URL

d21.langara.bc.ca/d21/m/home

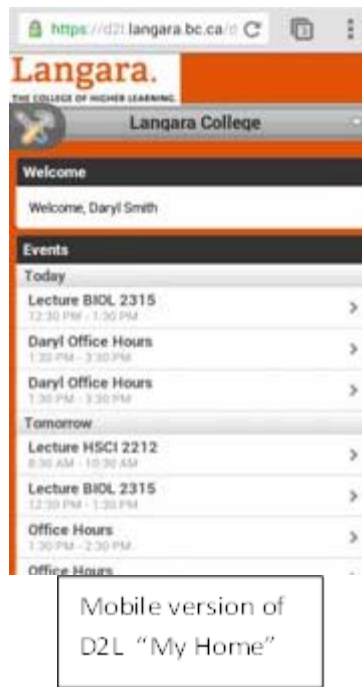
Using your MyLangara Username and Password.

Navigate to MyLangara www.langara.bc.ca and login using your Langara student number and password (e.g. 1001***** and password). Once you have logged in, follow the steps below. Note that MyLangara is not a mobile friendly environment.

1. Select the myCourses tab
2. Select one of the "My D2L homepage" links and NOT a course link. A course link will take you to the desktop version of the system, whereas the "My D2L homepage" link will take you to the web-based mobile app.







Once you have access the D2L Mobile "My Home", bookmark the page for easy access later. Note that you will need your Novell ID and password(e.g. dsmith, and *****) the next time you enter using this bookmarked page. Alternatively you can login again through MyLangara using your student ID and password.



Redirecting from the Desktop D2L to the Web-based D2L App

Occasionally a mobile device will open as the Desktop version of D2L rather than the Mobile version. If this happens and you want the mobile version enter the following URL in your browser as mentioned above.

d2l.langara.bc.ca/d2l/m/home

Mobile D2L My Home

Once you have reached the D2L web-based mobile app you will be brought to the mobile version of the “My Home”. Here you will see the Tool icon and a **grey navigation bar** with the words “Langara College” at the top of the page. The grey navigation bar is used to move between your courses and “My Home”. We will use this to navigate to your courses later. On the left side of the grey navigation bar is the Tool icon

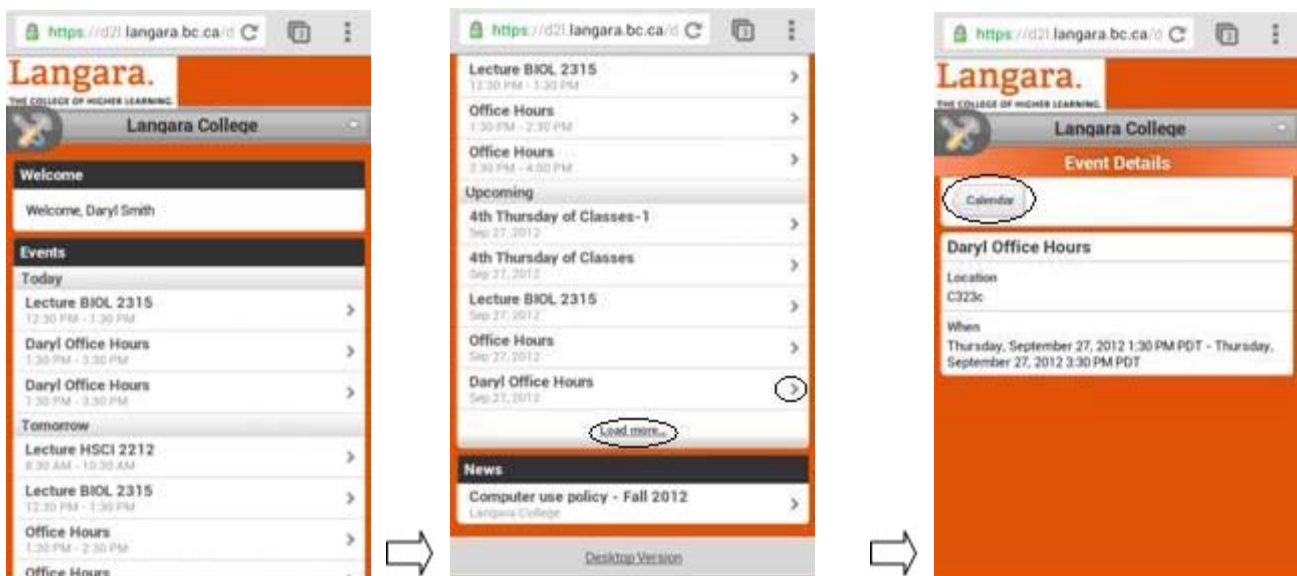


The **tool icon** is used to navigate to the various tools in the system and navigation through the system.

Below the “Welcome” widget are the “Events”. As with the desktop version, “Events” list Calendar items that will occur Today, Tomorrow and Upcoming.

1. Click on “Load More” to view more events in the Events list.
2. Click on an event in the Events list to get more details on a given event.
3. Click on “Calendar” to go to the D2L Calendar tool (we will be looking at this later in the workshop)
4. Click on the “**Tool icon**” and “**Home**” to go back to the My Home page.

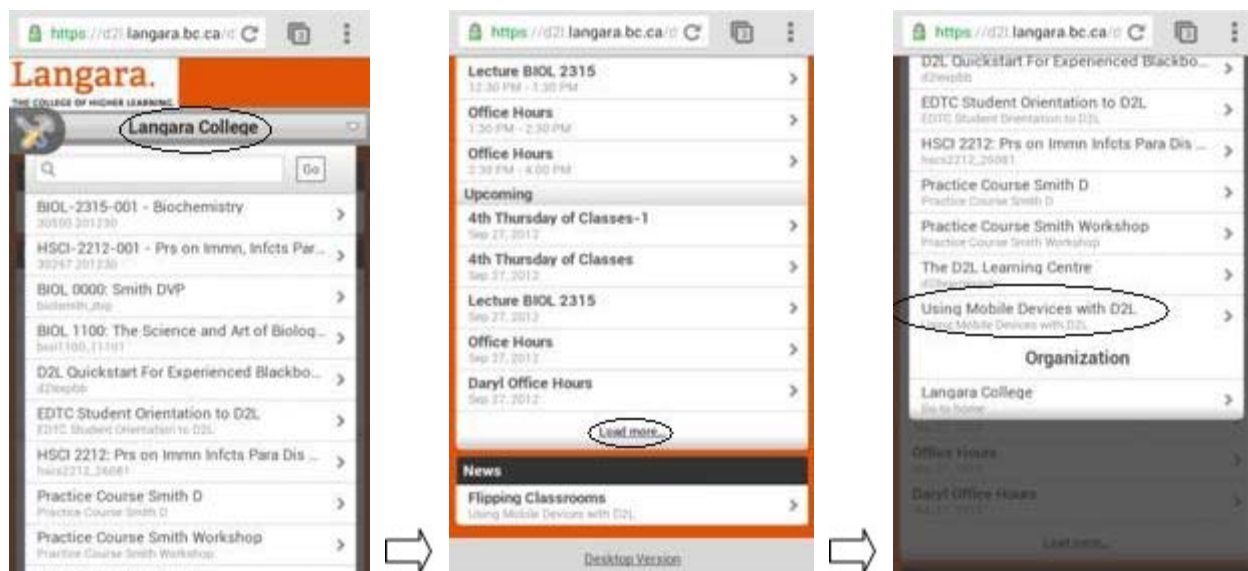
College wide news is also displayed on the on the home screen. We will be looking at the News tool later.





Accessing your Courses

Clicking on the grey navigation bar with the words “Langara College” will display a drop down menu listing up to 10 of your courses. For today we will go to “Using Mobile Devices with D2L”. If you don’t see this course, select “Load more...” at the bottom of the list to display additional courses. Note that you can also return to the My Home page by selecting it at the bottom of the list.

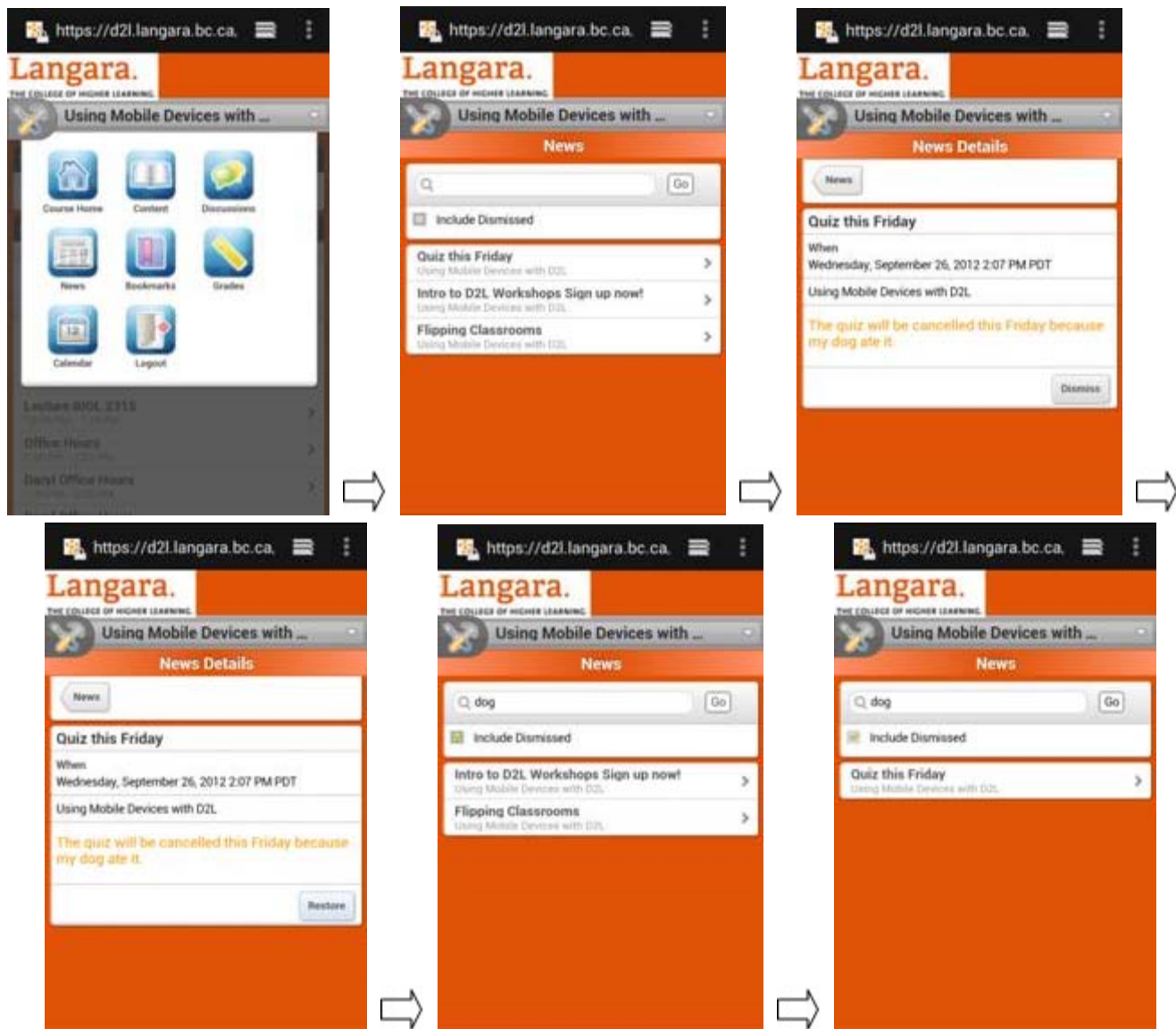


The Course Homepage is very similar to the My Home Page including specifics from your calendar. The main difference is that the “News” is now specific for your course.

News

The News can be accessed from the course home page as seen above or through selecting the tool icon and then selecting the News Icon from the list.

1. Click on News Item Icon to bring up a list of News Items
2. Click on an individual Item to display an individual item.
3. If you no longer want to view the item in your list of News, select “Dismiss”.
4. Selecting the Restore button will restore the item to the News List
5. To restore a dismissed News Items once you have returned to the News list, search for the News Item in select the box to “Include Dismissed”.

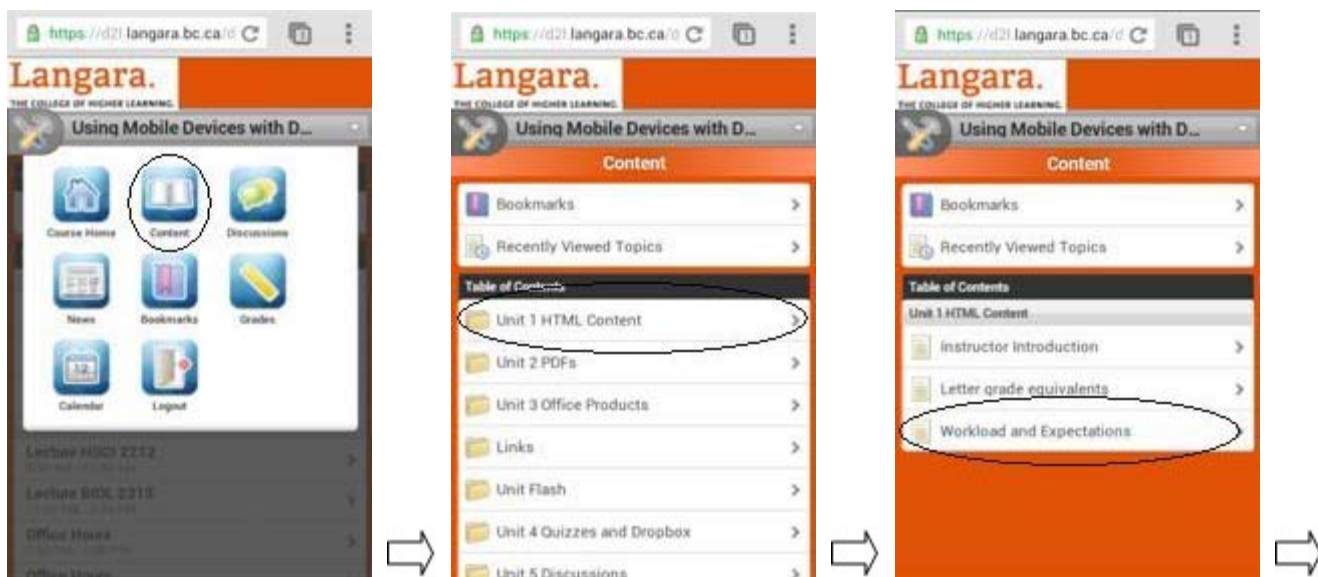


Accessing Content

Display of items in the Content tool tends to vary the most between devices and platforms.

1. Select the Tool icon to present a menu of available tools in the course that you just selected.
2. Now select the Content Icon.
3. Selecting Content takes you to menu displaying Bookmarks, Recently Viewed Topics, and the Table of Contents showing Modules for the course.
4. Select a Module to display a list of the Content items within the Module.
5. Navigate to individual course content items from here.
6. In a content item select the Bookmark icon next to Content button to bookmark that content item for easy access at a later point
7. Select the “breadcrumbs” or “arrows” in a content item to allow you navigate backwards and forwards with a Module or from one Module to the next
8. Selecting the Content button next to the Bookmark Icon will take you back to the list of content items in a Module
9. Selecting the black Table of Contents bar will take you back to the top level of the table of contents and show you the modules with in a course.
10. Selecting Bookmarks will take you back to your list of Bookmarked content.

Note that any adjustments made on the mobile interface will be reflected on the desktop version. For example, a bookmark that is made on the mobile interface will appear as a bookmark when you access the desktop version of the course.

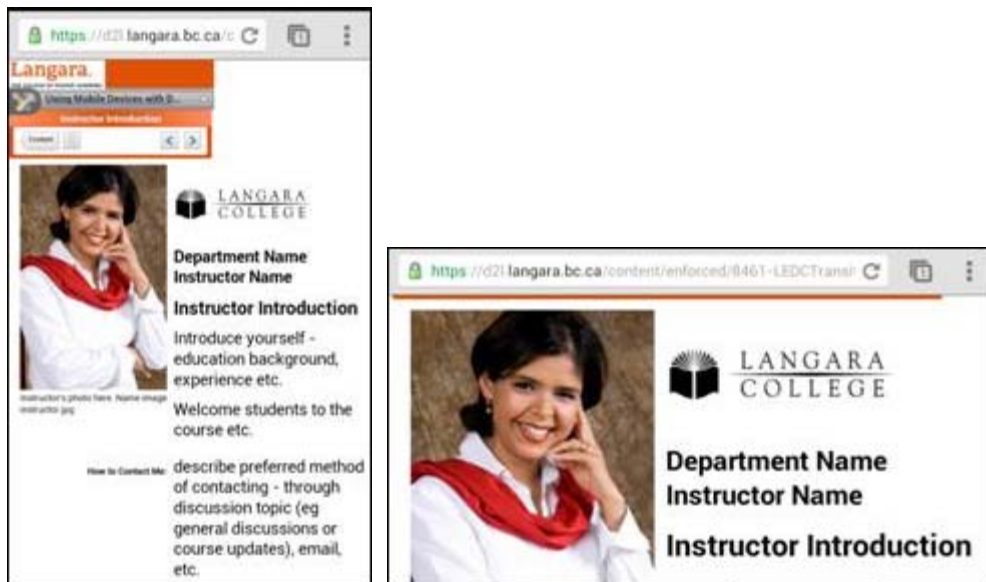




Content Formats

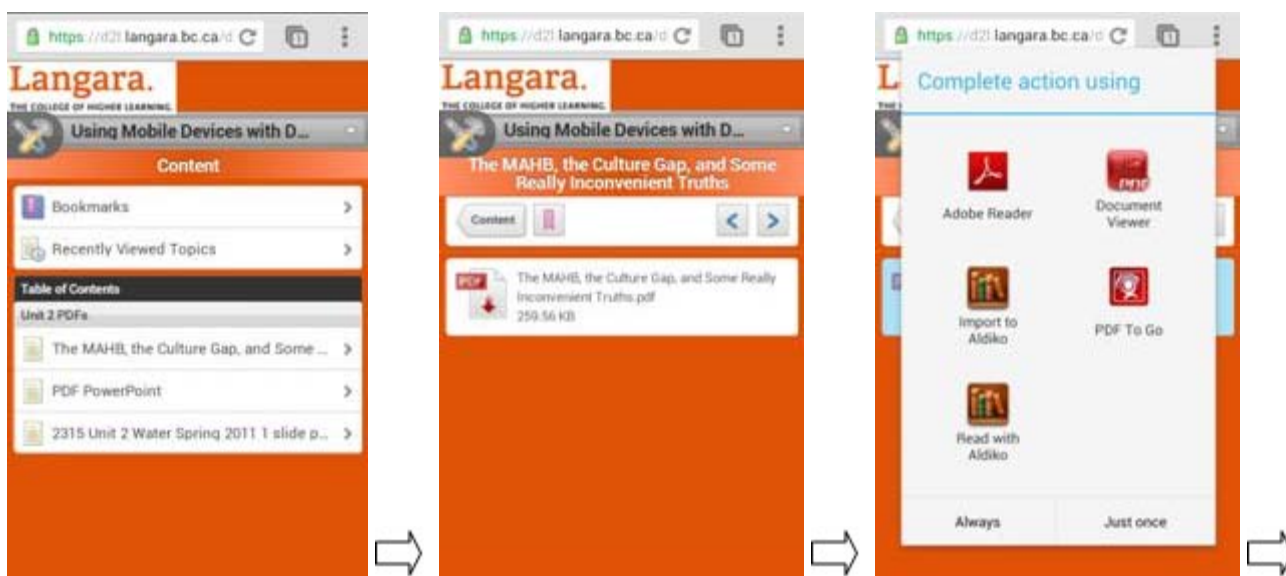
HTML

HTML is the default file format within D2L and works well across all browsers and platforms. Content appears as expected in most cases. Occasionally a figure or table may not fit on the small screen, however, shifting your device to the “landscape” position will work. Notice that the size of the image adjusts to fit the new perspective in the following example.



PDFs

PDFs generally display content in a way that is be accessible on the small screen. Typically the PDF content is downloaded and may be opened in another application. PDF documents containing large amount of text, such as a journal articles may require the user to enlarge the text for easier reading.





Enlarged view of PDF

The human predicament—climate disruption, loss of biodiversity and ecosystem services, toxification of the planet, the potential impacts of nuclear war, and social and economic inequities that impede solutions to escalating environmental problems—has been amply described [1]. Although the steps needed to solve the predicament are clear, few have been taken even as the situation steadily de

Unit 2 – Water, Noncovalent Interactions, Acids, Bases and Buffers

Unit 2 - 1

Outline

2.1 The Water Molecule is Polar.....	6
2.2 Hydrogen Bonding in Water.....	10
2.3 Water Is an Excellent Solvent.....	13
A. Ionic and Polar Substances Dissolve in Water.....	13
B. Cellular Concentration and Diffusion.....	18
C. Osmotic Pressure.....	19
2.4 Nonpolar Substances Are Insoluble in Water.....	20

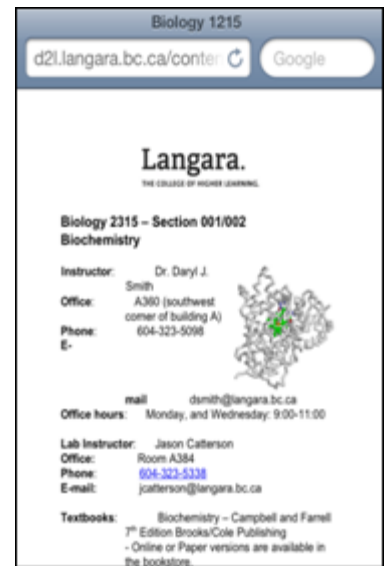
PowerPoint Slides which have been converted to PDF.

Microsoft Office Formats

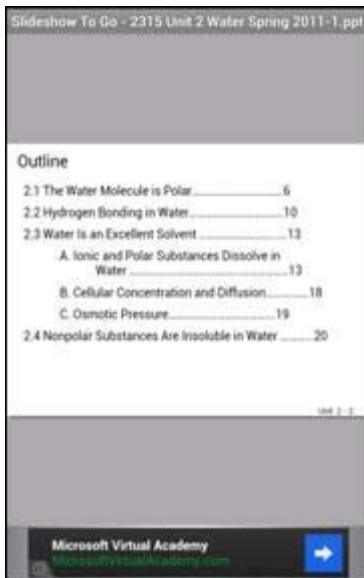
Microsoft Word – Some platforms will require you to download an Office product and then you will be given the choice of apps to open the document. Word documents may appear differently on the small screen than what you would expect on the desktop. Format and layout of the content may vary especially when a figure has been inserted.

Samsung Galaxy
Nexus-Android
Device

Apple iPod
Touch- iOS
Device

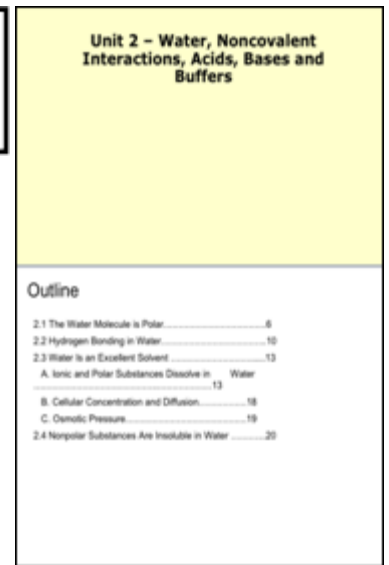


Microsoft PowerPoint – Formatting issues exist with PowerPoint files as well.



Samsung Galaxy
Nexus-Android
Device

Apple iPod
Touch- iOS
Device



Excel- Some of the charts created from table will not render correctly. It is recommended that you view these from a desktop interface.

Links

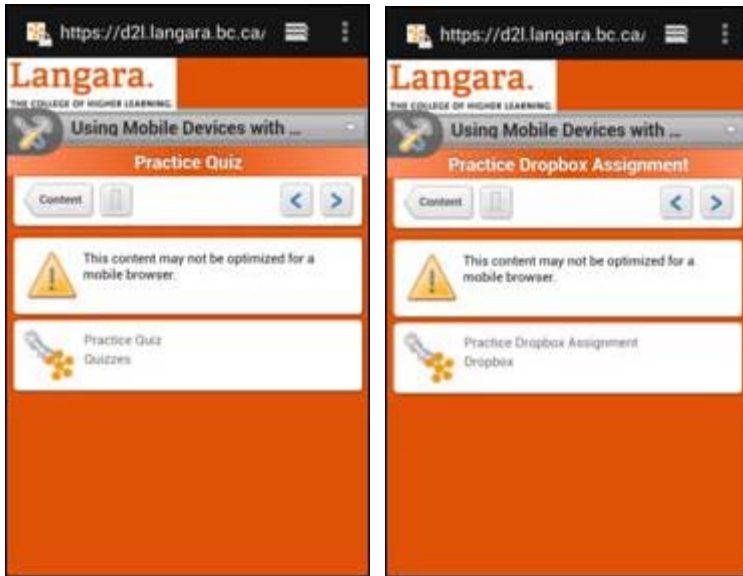
Navigate to the Links Units Module to explore what works best on you device.

Flash

Recently Flash based web content has been a controversial topic in the internet community. Content that requires a Flash Player could be an issue when dealing with mobile devices. Apple mobile devices have never supported Flash content. Increasingly, Android based systems and browsers also do not support Flash content.

Dropbox and Quizzes

At this point neither the Dropbox nor Quizzes have been optimized for mobile devices. Accessing either of these components using a smart phone comes with a warning seen in the following figures.



If you choose to continue you will be taken to the desktop version of both of these tools. Issues include inconsistent selection of items within quiz, virtual keyboards covering quiz questions and answers, and difficulty navigating the small text and small screen of the hand held mobile device. At this time it is NOT recommended to use mobile devices for completing tasks in Dropbox or Quizzes.



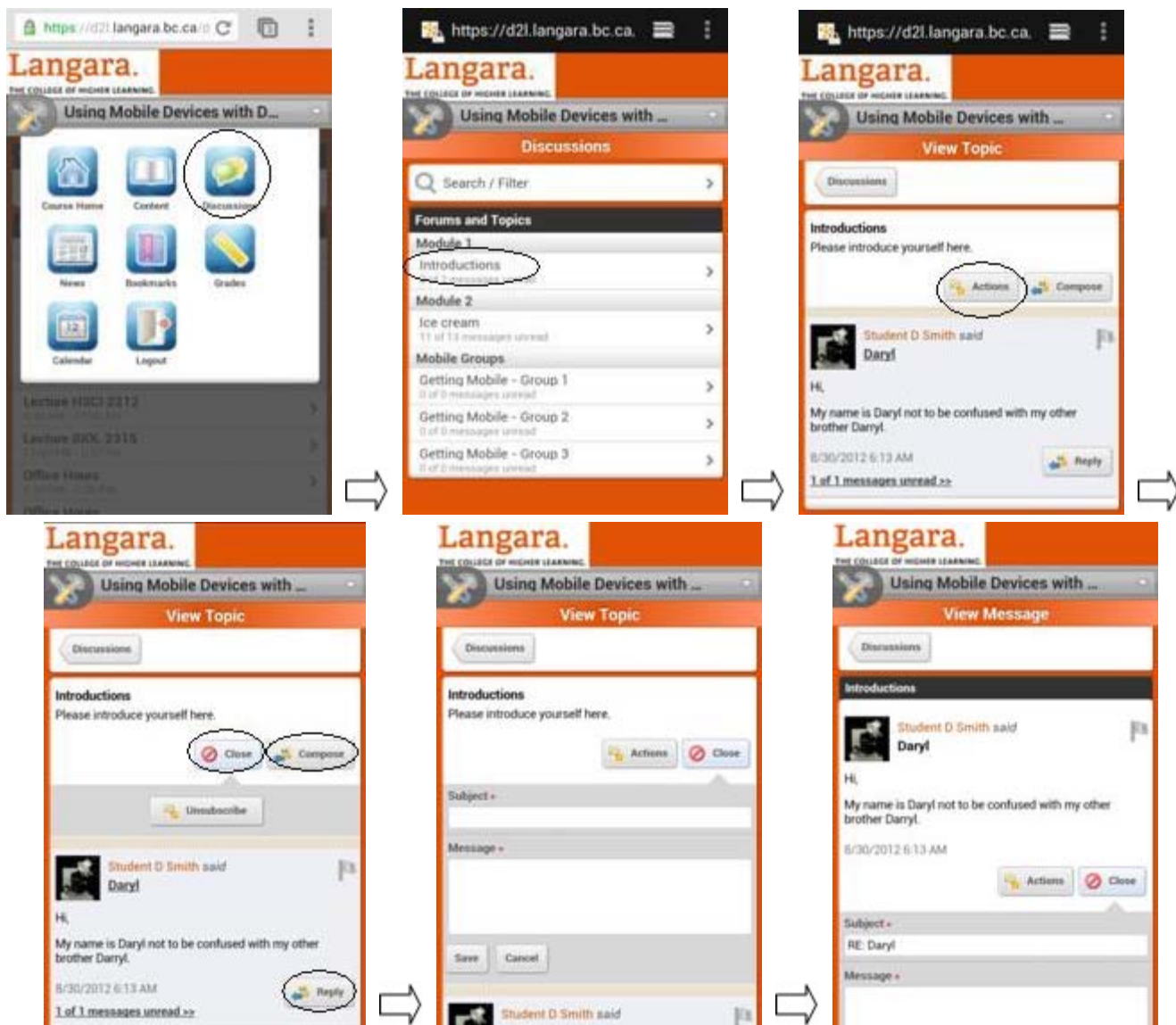
Small screen size and overlapping keyboards make taking a quiz difficult on the small hand held screen



Discussions

Students can read, post, and reply to all discussions items using the discussion tool. Select the Discussion Tool using the Tool Icon.

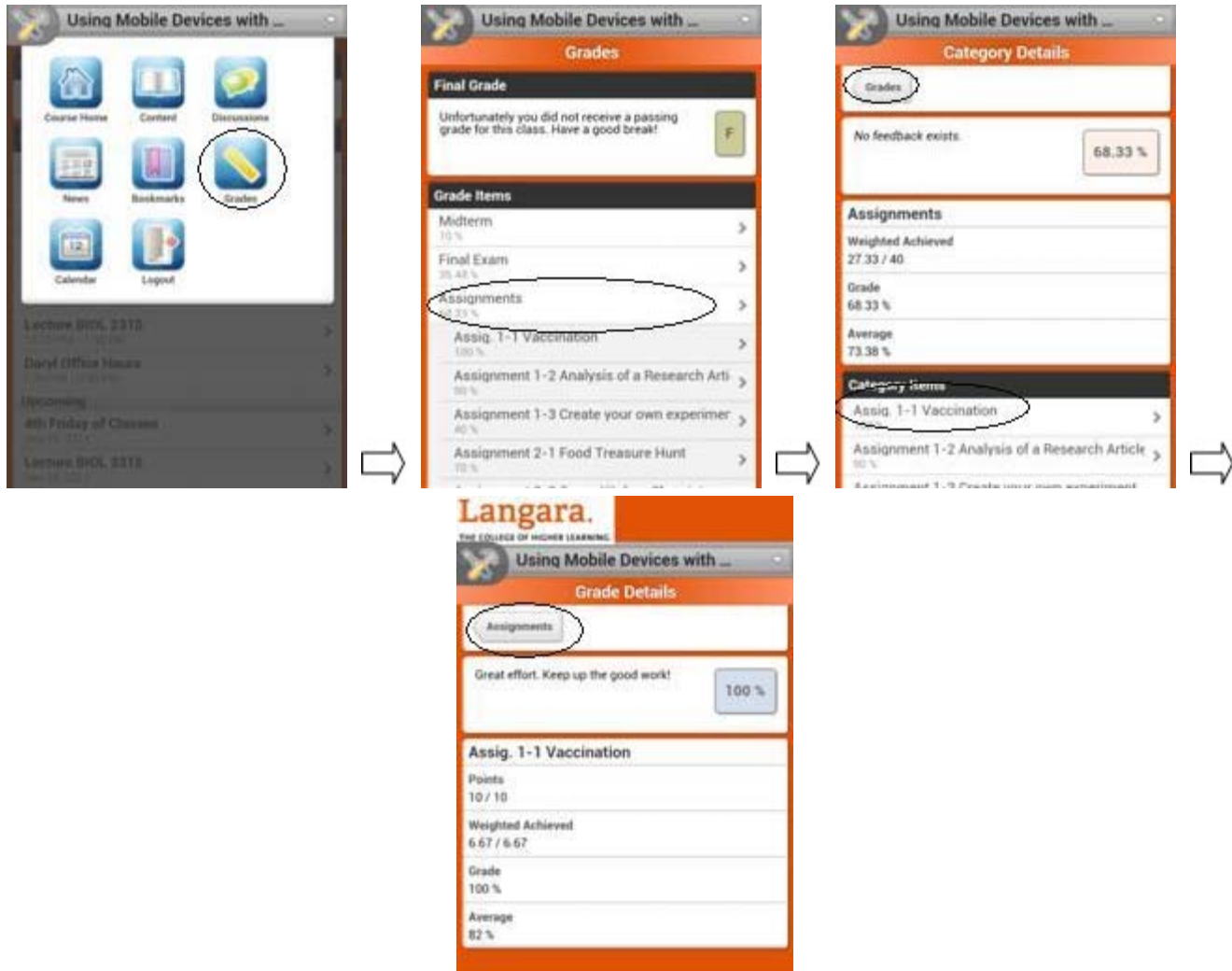
1. The Discussion Tool will display a list of Topic and Forums for your course
2. Selecting a Topic within a Forum will take you to the View Topic Page
3. The information for the Topic is displayed under the Topic Title.
4. Select the Action button to Subscribe to a topic. This will allow notifications to be sent to the user when someone has replied to a post in a Topic or Composed a new Message. Notifications can be set up on the Desktop version of the Course.
5. Select the Compose button to compose a message in a given topic by entering a Subject and Message
6. Select the Reply button to Reply to a message in Topic



Grades

Grades are one of the most often accessed features of a learning management system. The D2L mobile-app allows students to access grades and view comments.

1. Select the Tool Icon and then the Grades Tool
2. Select a Grade Category. This will display details for that Grade Category and all Grade Items within the Category.
3. Select a grade item. This will take you to a page that displays additional information about the item.
4. Select Assignments and then Grades to return to the List of Grade Categories and Items.



Calendar

The Calendar tool can be accessed by selecting an item from the Events List on the course homepage or through the Tool Icon.

1. Select the Tool Icon and then Calendar Icon
2. The Calendar tool will Display a calendar highlighting today's date and a list of events for today
3. Dates with scheduled events are darker/bolder than dates which do not contain scheduled events.
4. Select a date with schedule events to see a list of Events for that day.
5. Select an Event to get more details about an Event
6. Select Calendar to return to the Calendar view
7. Use the arrows at the top of the Calendar to move to the previous or next month

