

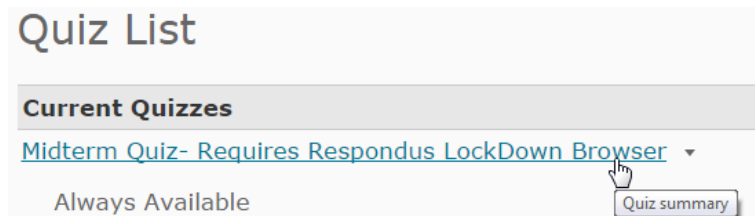
## Using Respondus LockDown Browser in Brightspace Quizzes

Respondus LockDown Browser is a custom browser that locks down the testing environment within a learning management system. Your instructor may use this to prevent you from leaving the quiz screen during quizzes or exams in Brightspace.

### How to Use Respondus LockDown Browser in Brightspace

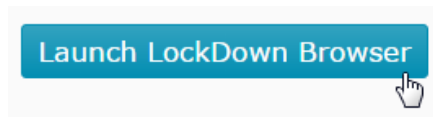
#### 1. Access the quiz

Click on the quiz under Assessments > Quizzes.



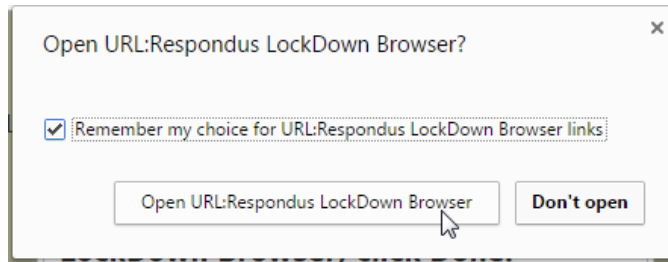
#### 2. Launch the LockDown Browser

Click the “Launch LockDown Browser” button.



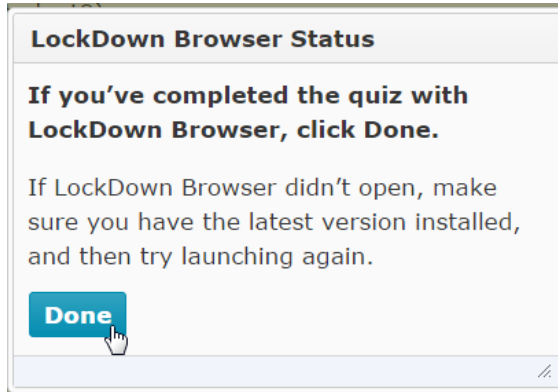
#### 3. Confirm opening LockDown Browser

If this is your first time using LockDown Browser on the computer you are using, you may see a pop-up window asking if you want to open the LockDown Browser URL. Click “Open URL.”



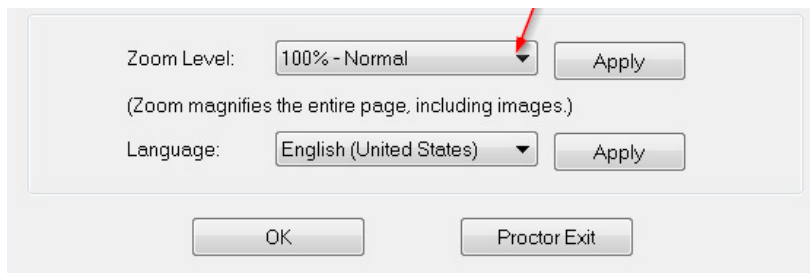
#### 4. Complete the quiz as normal

Once you've submitted the quiz, you will see another pop-up window titled "LockDown Browser Status," asking if you are finished with your quiz. If you are, click "Done" to close LockDown Browser and return to Brightspac.

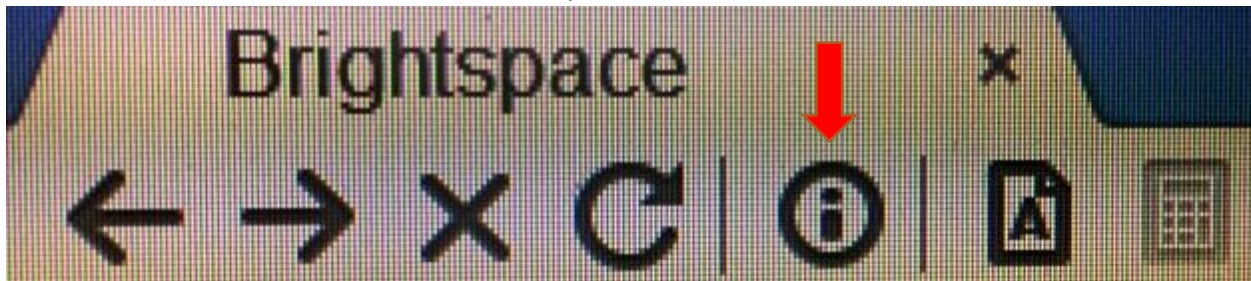


#### What do I do if the text is too small?

If you start a quiz using Respondus LockDown Browser and you find the font too small to read, you can increase the zoom level in your browser.



Just click on the "i" icon in the toolbar at the top of the screen.



This will open a new window (titled "Respondus LockDown Browser – Information"), where you can adjust the zoom level. Select your preferred zoom level, and then click "Apply," and click "OK" to close the information window.

This will magnify the entire page, including images.

## Which desktop do I choose?

---

When logging in an on-campus computer, you may be presented with more than one desktop option: **Shared Desktop**, **CSIS Desktop**, or **Sage 50**. Always choose **Shared Desktop**.

